

Common Shifts in Common Keys

minor 3rds with 1st finger

Bb

F

C

G

D

A

E

Four measures of musical notation for the G string. Each measure shows a pair of notes connected by a slur, with a '1' below the first note. The keys are Bb, F, C, and G. The notes are: Bb2-G2, F2-E2, C2-B1, and G2-F2.

G string

Four measures of musical notation for the D string. Each measure shows a pair of notes connected by a slur, with a '1' below the first note. The keys are Bb, F, C, and G. The notes are: Bb3-G3, F3-E3, C3-B2, and G3-F3.

D string

A string

Four measures of musical notation for the A string. Each measure shows a pair of notes connected by a slur, with a '1' above the first note. The keys are Bb, F, C, and G. The notes are: Bb4-G4, F4-E4, C4-B3, and G4-F4.

E string

Four measures of musical notation for the E string. Each measure shows a pair of notes connected by a slur, with a '1' above the first note. The keys are Bb, F, C, and G. The notes are: Bb5-G5, F5-E5, C5-B4, and G5-F5.

Variations for Shifting Practice

(do on all strings)

A single line of musical notation in treble clef. It contains six measures. The first two measures show a pair of notes with a slur and a '1' above the first note, with a 'V' above the second note. The next two measures show a pair of notes with a slur and a '1' above the first note, with a 'V' above the second note. The last two measures show a pair of notes with a slur and a '1' above the first note, with a 'V' above the second note.

Write in your own variations

A single line of musical notation in treble clef. It contains six measures. The first measure shows a pair of notes with a slur and a '1' above the first note. The following five measures are empty staves.

Common Shifts in Common Keys

minor 3rds with 2nd finger

E_b B_b F C G D A E

G string



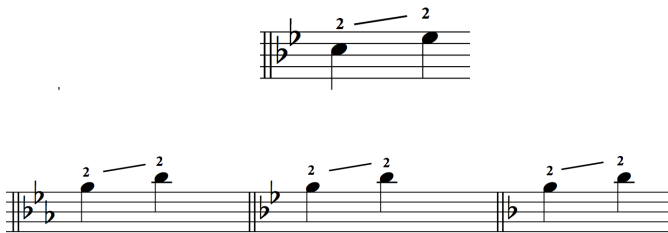
D string



A string

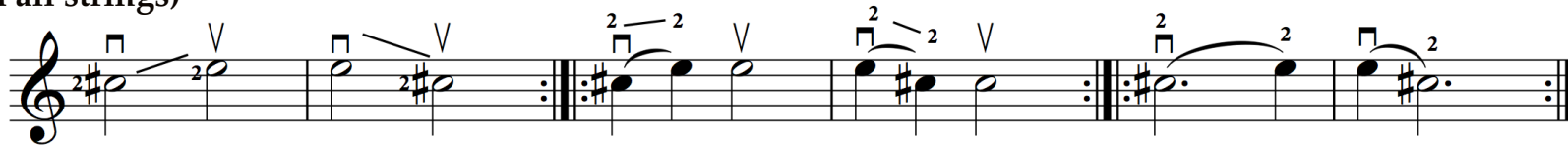


E string

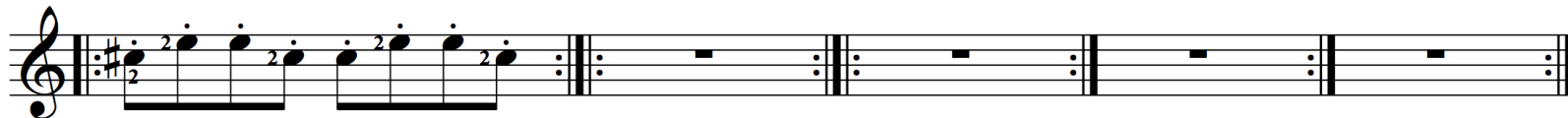


Variations for Shifting Practice

(do on all strings)



Write in your own variations



Common Shifts in Common Keys

major 3rds with 1st finger

E_b

B_b

F

C

G

D

A

E

G string

Musical notation for the G string showing major 3rd shifts with the 1st finger in Eb, Bb, and F keys. Each key is represented by a two-measure phrase: Eb (Bb2, D2), Bb (G2, Bb2), and F (A2, C3). Fingerings are indicated as 1-1.

D string

Musical notation for the D string showing major 3rd shifts with the 1st finger in Eb, Bb, and F keys. Each key is represented by a two-measure phrase: Eb (G2, Bb2), Bb (F2, Ab2), and F (G2, A2). Fingerings are indicated as 1-1.

A string

Musical notation for the A string showing major 3rd shifts with the 1st finger in Eb, Bb, and F keys. Each key is represented by a two-measure phrase: Eb (E2, Gb2), Bb (D2, Fb2), and F (E2, G2). Fingerings are indicated as 1-1.

Musical notation for the A string showing major 3rd shifts with the 1st finger in D, A, and E keys. Each key is represented by a two-measure phrase: D (A2, C#3), A (E2, G#2), and E (A2, C3). Fingerings are indicated as 1-1.

E string

Musical notation for the E string showing major 3rd shifts with the 1st finger in Eb, Bb, and F keys. Each key is represented by a two-measure phrase: Eb (E2, Gb2), Bb (D2, Fb2), and F (E2, G2). Fingerings are indicated as 1-1.

Shifting Practice Examples

Musical notation for shifting practice examples in Eb, Bb, and F keys. The first line shows eighth-note patterns with vibrato (V) and fingerings (1). The second line shows quarter-note patterns with vibrato (V) and fingerings (1). The third line shows quarter-note patterns with vibrato (V) and fingerings (1). The fourth line shows quarter-note patterns with vibrato (V) and fingerings (1).

Musical notation for shifting practice examples in D, A, and E keys. The first line shows eighth-note patterns with vibrato (V) and fingerings (1). The second line shows quarter-note patterns with vibrato (V) and fingerings (1). The third line shows quarter-note patterns with vibrato (V) and fingerings (1). The fourth line shows quarter-note patterns with vibrato (V) and fingerings (1).

Common Shifts in Common Keys

major 3rds with 2nd finger

E_b

B_b

F

C

G

D

A

E

Three measures of musical notation for the G string. The first measure is in E-flat major (two flats), the second in B-flat major (two flats), and the third in F major (one flat). Each measure shows a major third interval with a '2' and a slur above the notes, indicating the second finger shift.

G string

One measure of musical notation for the E string in E major (three sharps). It shows a major third interval with a '2' and a slur above the notes, indicating the second finger shift.

Three measures of musical notation for the D string. The first measure is in E-flat major (two flats), the second in B-flat major (two flats), and the third in F major (one flat). Each measure shows a major third interval with a '2' and a slur above the notes, indicating the second finger shift.

D string

Three measures of musical notation for the A string. The first measure is in E-flat major (two flats), the second in B-flat major (two flats), and the third in F major (one flat). Each measure shows a major third interval with a '2' and a slur above the notes, indicating the second finger shift.

A string

Three measures of musical notation for the E string. The first measure is in G major (one sharp), the second in D major (two sharps), and the third in A major (three sharps). Each measure shows a major third interval with a '2' and a slur above the notes, indicating the second finger shift.

E string

Shifting Practice Examples

A single line of musical notation on a treble clef staff. It contains three pairs of measures. The first pair shows a shift from a lower note to a higher note with a 'V' above the second note. The second pair shows a shift from a higher note to a lower note with a 'V' above the second note. The third pair shows a shift from a lower note to a higher note with a 'V' above the second note. Each pair includes a slur and a '2' above the notes.

A single line of musical notation on a treble clef staff. It contains three pairs of measures. The first pair shows a sequence of notes with a '2' above each note. The second and third pairs show rests, indicating a shift to a higher or lower register.